

Chelsea Rotary *Whispering Waves*

3316

11th July 2023



**CREATE HOPE
in the WORLD**



Presidents [Simon Pearson](#)
 [Lynn Harrison](#)

Presidents Elect

Secretary [Lesley Pichler](#)
Treasurer [Noel Jenkinson](#)
Club Contact [Kevin Harrison](#)
 0407 772 225

RI President [Gordon McInally](#)

**International
Community
Youth
Vocational
Foundation
Marketing &
Membership:
Sergeant
Governance
Newsletter**

[Regina Murcia](#)
[Graham Smith](#)
[Keith Chamberlain](#)
[Peter Batten](#)
[Peter Batten](#)
[Kevin Harrison](#)

[Graham Smith](#)
[Hans Wehmoller](#)
[Ian Button](#)

**Please click on any of the people above
to send them an email.
They'd love to hear from you.**

Reward Rotary Club of Chelsea by doing your banking.

Drop into your branch at Aspendale Gardens Shopping Centre,
Aspendale Gardens or phone 9588 0610 to find out more.

Bendigo and Adelaide Bank Limited. ABN 11 068 049 178. AFSL 237879. CLUB14 (168421_v1) (22/10/2012)



Aspendale Gardens-Edithvale **Community Bank®** Branch



ROTARY'S MOTTO IS "SERVICE ABOVE SELF"

The object of Rotary is to encourage and foster the ideal of service as a basis of worthy enterprise and, in particular, to encourage and foster:

FIRST: The development of acquaintance as an opportunity for service.

SECOND: High ethical standards in business and professions, the recognition of the worthiness of all useful occupations, and the dignifying of each Rotarian's occupation as an opportunity to serve society.

THIRD: The application of the ideal of service in each Rotarian's personal, business and community life.

FOURTH: The advancement of international understanding, goodwill and peace through a world fellowship of business and professional persons united in the ideal of service.

INDUCTIONS

Ray Smith	1 July 1973
Olaf Zalmstra	1 July 2008
Peter Washington	16 July 1996
Lynn Harrison	27 July 1998
Grant Gittus	1 July 2007

BIRTHDAYS

Kerry Zalmstra	14 July
----------------	---------

ANNIVERSARIES

None.

RYLA Graduate sues Australian Government (and wins!)

Robodebt victim on 'traumatising' experience with the scheme ...

YouTube · 9 News Australia · 8 July 2023



Well done Felicity de Somerville (aka Felicity Button - past [RYLA](#) graduate) for standing up as a lead litigant against the [Robodebt](#) Fraud perpetrated by the Commonwealth Government over many years. Felicity waived having her debt forgiven, in order for over 400,000 class action plaintiffs to have their debts wiped. Felicity has gone on to gain a Masters in Nursing Education, is completing an MBA and leads and manages her own enterprise [Home Caring Mount Eliza](#). Click the picture to watch the interview.

The Weekly Newsletter of the ROTARY CLUB OF [CHELSEA](#) (INC) [DISTRICT 9810](#)

Charter granted 12/10/[1954](#) ABN 19057 610 183

P O Box 103 Chelsea Vic. 3196

Normally, our Club meets weekly at the [Chelsea RSL](#) Thames Promenade. Chelsea Tuesday Evenings 6.15pm for 6.45pm start however some meetings are occasionally held online.

Club Bank Details: [Bendigo Bank](#) BSB 633 000 Accounts: 1424 861 33 (Admin.) 1497 181 24 (Fundraising)

Guests, family, and friends are very welcome to come to our meetings.

PLEASE book them in by contacting Kevin Harrison 0407 772 225

Meetings are held at the Chelsea RSL unless otherwise stated.

Welcome Presidents Lynn and Simon!

Congratulations to Presidents Lynn and Simon (in no particular order). We look forward to a great year with you both and all of our Committee Directors and members. The Board has decided we won't be meeting this week, but we will start afresh next week with a planning meeting to discuss the coming year.

The Directors of our Committees are listed on the front page of this newsletter, and we encourage any of our members (or community members for that matter) who have an interest in any Committee or projects to speak with the appropriate Committee Director or Project Lead – your assistance will be gratefully welcomed!

See you on the 18th July!

Stay warm, stay safe.

Ian.



Men's Shed Update (thanks Sandy!)



We have some fantastic news for our members at the Chelsea Men's Shed. It's full steam ahead for the refurbishment of our new home. We are relocating from our current location at the rear of the Church of Christ in Blantyre Ave Chelsea to the former Chelsea Kindergarten located in Catherine Ave Chelsea.

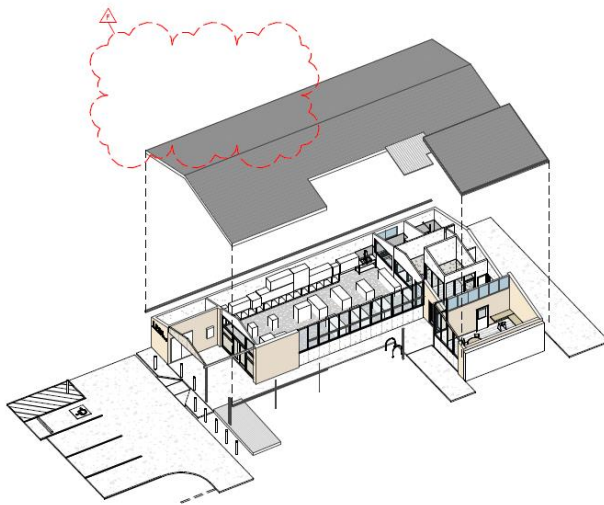
With the help of the Victorian government and in particular Tim Richardson, we were able to obtain a grant of \$80,000 to go towards the project. Also thanks to the following: Lowes Construction, Rotary Club of Chelsea and Global Office and Warehouse solution of Carrum Downs we have been able to raise \$40,000 as our contribution to the project. The refurbishment is a major project, and we thank Kingston Council for their support and financing of this \$1.1 Million project.

The new premises will give us triple the amount of space available in comparison to our current premises.

The committee and members are very excited to see the project finally get underway with the appointment of the developers Sim built Pty Ltd. The planned completion date is in March 2024. We are told that work will commence in July.

Chelsea Men's Shed Redevelopment 71 Catherine Avenue, Chelsea

Phase: Design Development



Architectural Drawing Schedule	
Sheet Number	Sheet Name
A100	Cover Sheet & Drawing List
A101	Finishes Schedule
A102	Fixtures Schedule
A103	Site Plan - Existing & Demolition
A104	Plan - Existing & Demolition
A105	Plan - RCP - Existing & Demolition
A106	Site Plan
A107	Plan
A108	Plan - RCP
A109	Plan - Roof
A110	Elevations
A111	Wet Areas & Joinery - Sheet 01
A112	Wet Areas & Joinery - Sheet 02
A113	Signage
A114	Window Schedule
A115	Schedules - Sheet 01
A116	Floor Signage Schedule - Sheet 02
A802	AS1428.1 Details - Sheet 01
A803	AS1428.1 Details - Sheet 02



No.	Description	Date
A	Detailed Design - Client Design Issue	220304
B	Detailed Design - Client Design Issue	220330
C	Detailed Design - Client Design Issue	220408
D	Detailed Design - Client Design Issue	220419
E	Detailed Design - Client Design Issue *	220513
F	Detailed Design - Client Design Issue	220627

CohenLeigh Architects

Suite 1 Level 1, 5 Merrase Street
Sandringham, Victoria 3191
(03) 9511 6888
www.cohenleigh.com
info@cohenleigh.com

PROJECT
Chelsea Men's Shed

CLIENT
City of Kingston

PROJECT SCALE
220102 1 : 750

DRAWING TITLE

Cover Sheet & Drawing List

DRAWING
A100

REV
F

Weekly Program

Upcoming events
July 2023

Rotary 
Club of Chelsea

4th **Hand Over Evening - Chelsea Hub**

July

6.00pm for 6.30pm start.

\$25.00 per head, RSVP, Kevin Harrison, 0407 772 225

Venue: Chelsea Hub, 3 - 5 Showers Ave, Chelsea, 3196

11th **No Meeting**

July

Recovery night

Venue: Longbeach RSL, 4 Thames Ave, Chelsea, 3196

18th **General Meeting**

July

Cheque presentation to art show beneficiaries

Mtg
3304

Venue: Longbeach RSL, 4 Thames Ave, Chelsea, 3196

25th **General Meeting**

July

Board Meeting prior 5.30pm

Simon & Lynn's planning night

Venue: Longbeach RSL, 4 Thames Ave, Chelsea, 3196

1st **General Meeting**

August

TBA

Venue: Chelsea Hub, 3 - 5 Showers Ave, Chelsea, 3196