

Chelsea Rotary *Whispering Waves*

3340

1st April 2024



**CREATE HOPE
in the WORLD**



Presidents [Simon Pearson](#)
 [Lynn Harrison](#)

Presidents Elect

Secretary [Lesley Pichler](#)
Treasurer [Noel Jenkinson](#)
Club Contact [Kevin Harrison](#)
 0407 772 225

**International
Community
Youth
Vocational
Foundation
Marketing &
Membership:
Sergeant
Governance
Newsletter**

[Regina Murcia](#)
[Graham Smith](#)
[Keith Chamberlain](#)
[Peter Batten](#)
[Peter Batten](#)
[Kevin Harrison](#)

[Graham Smith](#)
[Hans Wehmoller](#)
[Ian Button](#)

RI President [Gordon McInally](#)
District Governor [Ian Ballantine](#)
Assistant District Governor [Reny Frighetto](#)

**Please click on any of the people above
to send them an email.
They'd love to hear from you.**

Reward Rotary Club of Chelsea by doing your banking.

Drop into your branch at Aspendale Gardens Shopping Centre,
Aspendale Gardens or phone 9588 0610 to find out more.

Bendigo and Adelaide Bank Limited. ABN 11 068 049 178. AFSL 237879. CLUB14 (168421_v1) (22/10/2012)



Aspendale Gardens-Edithvale **Community Bank®** Branch



ROTARY'S MOTTO IS "SERVICE ABOVE SELF"

The object of Rotary is to encourage and foster the ideal of service as a basis of worthy enterprise and, in particular, to encourage and foster:

FIRST: The development of acquaintance as an opportunity for service.

SECOND: High ethical standards in business and professions, the recognition of the worthiness of all useful occupations, and the dignifying of each Rotarian's occupation as an opportunity to serve society.

THIRD: The application of the ideal of service in each Rotarian's personal, business and community life.

FOURTH: The advancement of international understanding, goodwill and peace through a world fellowship of business and professional persons united in the ideal of service.

INDUCTIONS

Michael Martin	1 April 1987
Maree Vinocuroff	1 April 2008

BIRTHDAYS

Grant Gittus	5 April
Barry McArtney	15 April
Terre Caughey	30 April

ANNIVERSARIES

Marion and Keith Chamberlain	10 April
Maria Alberquerque and JJ Baptista	13 April
Kerry and Olaf Zalmstra	19 April



Bonbeach Sharks women's football team funding grant video.

188 views • 9 months ago



Bonbeach Sharks

Bonbeach Football Netball Club Women's footy side have put together a video to show what they are all about. Family, community ...

The Weekly Newsletter of the ROTARY CLUB OF [CHELSEA](#) (INC) [DISTRICT 9810](#)

Charter granted 12/10/[1954](#) ABN 19057 610 183

P O Box 103 Chelsea Vic. 3196

Normally, our Club meets weekly at the [Chelsea RSL](#) Thames Promenade. Chelsea Tuesday Evenings 6.15pm for 6.45pm start however some meetings are occasionally held online.

Club Bank Details: [Bendigo Bank](#) BSB 633 000 Accounts: 1424 861 33 (Admin.) 1497 181 24 (Fundraising)

Guests, family, and friends are very welcome to come to our meetings.

PLEASE book them in by contacting Kevin Harrison 0407 772 225

Meetings are held at the Chelsea RSL unless otherwise stated.

CHELSEA ROTARY MEETING 3327

TUESDAY 19TH. MARCH, 2024



Our previous meeting was held at the Bonbeach YCW Junior Football Club in Bonbeach. The Club has cricket, netball and football for boys and girls aged 5-17 years. They actively promote the benefits of playing sport to ensure that ABOVE ALL, the players have FUN and have a GO, and are enthusiastically supported by the City of Kingston.



Mayor Cr. Jenna Davey-Burns was our “special guest”. It was lovely she had been able to make time in her busy schedule to come along for the cheque

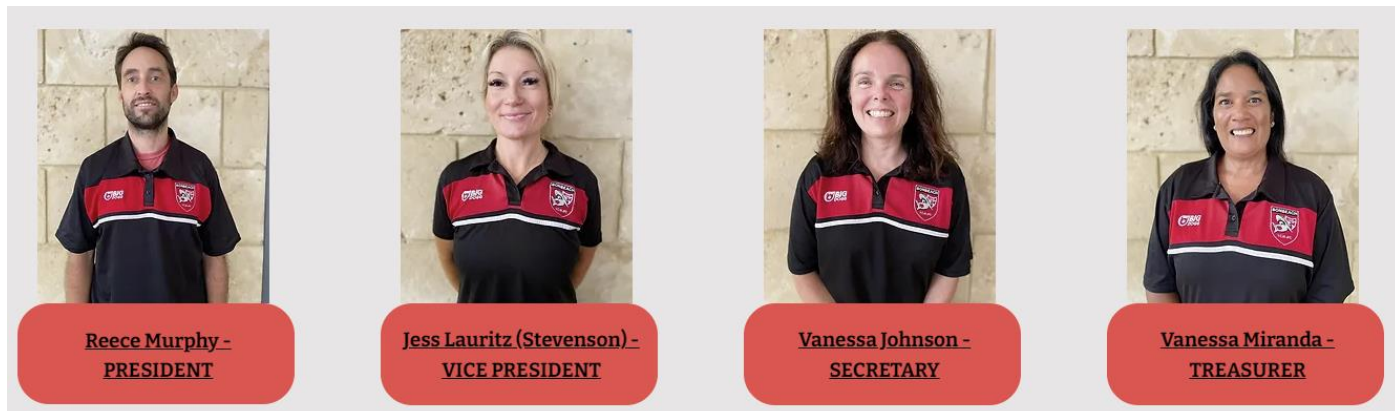
presentation to Bonbeach YCW for their assistance with the Farmers Market.

The evening commenced with a delicious barbecue and salads for dinner, which was enjoyed by all.

Bonbeach YCW will be putting the \$2816.64 received for helping at three Farmers' Markets towards new jumpers for their teams.



If anyone is interested in learning more about Bonbeach YCW, or have children who would like to join, please contact www.bonbeachycw.com.au or President Reece Murphy.





Rotary Club of Chelsea Annual Art Show

The Chelsea Art Show is one of the Peninsula's biggest art shows with over 400 entries and \$5,200 in prizes.

Now in its 47th year, the show provides a showcase for artistic talent and is a major fundraiser for local charities.

Entry forms will be mailed/emailed out several weeks prior. If you have not exhibited before, please email info@chelseaartshow.com.au to be added to the mailing list.

The Chelsea Art Show is held at Chelsea Hall, 313 Station Street Chelsea. For further information, see the [Location page](#).

Entry to the show is \$5.

All proceeds go to Lighthouse Foundation, who support children and young people who are homeless or at risk of homelessness.



Major Sponsor



Entries are now open for the 2024 show.

Entries close Friday 3rd May 2024

[Click here for more information](#)

I asked [Gemini](#) to draw a picture of Rotary in the style of Picasso.....

