

# Chelsea Rotary *Whispering Waves*

3351

24<sup>th</sup> June 2024



**CREATE HOPE  
in the WORLD**



**Presidents**     [Simon Pearson](#)  
                      [Lynn Harrison](#)

**Presidents Elect**

**Secretary**     [Lesley Pichler](#)  
**Treasurer**     [Noel Jenkinson](#)  
**Club Contact**   [Kevin Harrison](#)  
                          0407 772 225

**International  
Community  
Youth  
Vocational  
Foundation  
Marketing &  
Membership:  
Sergeant  
Governance  
Newsletter**

[Regina Murcia](#)  
[Graham Smith](#)  
[Keith Chamberlain](#)  
[Peter Batten](#)  
[Peter Batten](#)  
[Kevin Harrison](#)  
  
[Graham Smith](#)  
[Hans Wehmoller](#)  
[Ian Button](#)

**RI President**                     [Gordon McInally](#)  
**District Governor**             [Ian Ballantine](#)  
**Assistant District Governor** [Reny Frighetto](#)

**Please click on any of the people above  
to send them an email.  
They'd love to hear from you.**

Reward Rotary Club of Chelsea by doing your banking.

Drop into your branch at Aspendale Gardens Shopping Centre,  
Aspendale Gardens or phone 9588 0610 to find out more.

Bendigo and Adelaide Bank Limited. ABN 11 068 049 178. AFSL 237879. CLUB14 (168421\_v1) (22/10/2012)



Aspendale Gardens-Edithvale **Community Bank**<sup>®</sup> Branch



**ROTARY'S MOTTO  
IS "SERVICE  
ABOVE SELF"**

The object of Rotary is to encourage and foster the ideal of service as a basis of worthy enterprise and, in particular, to encourage and foster:

**FIRST:** The development of acquaintance as an opportunity for service.

**SECOND:** High ethical standards in business and professions, the recognition of the worthiness of all useful occupations, and the dignifying of each Rotarian's occupation as an opportunity to serve society.

**THIRD:** The application of the ideal of service in each Rotarian's personal, business and community life.

**FOURTH:** The advancement of international understanding, goodwill and peace through a world fellowship of business and professional persons united in the ideal of service.

**INDUCTIONS**

Kevin Harrison	16 June 1998
Simon Pearson	30 June 2001
Graham Smith	30 June 2001
Liz Lowe	10 June 2003

**BIRTHDAYS**

Ian Button	25 June
------------	---------

**ANNIVERSARIES**

Rosemary and Grant Gittus	29 June
---------------------------	---------

**Upcoming Events**



DISTRICT  
9815  
INAUGURAL  
CHANGEOVER

District 9815  
Changeover

Jun 29, 2024 6:30 pm – 10:30 pm

Cardinia Cultural Centre

The Weekly Newsletter of the ROTARY CLUB OF [CHELSEA](#) (INC) [DISTRICT 9810](#)

Charter granted 12/10/[1954](#) ABN 19057 610 183

P O Box 103 Chelsea Vic. 3196

Normally, our Club meets weekly at the [Chelsea RSL](#) Thames Promenade. Chelsea Tuesday Evenings 6.15pm for 6.45pm start however some meetings are occasionally held online.

Club Bank Details: [Bendigo Bank](#) BSB 633 000 Accounts: 1424 861 33 (Admin.) 1497 181 24 (Fundraising)

*Guests, family, and friends are very welcome to come to our meetings.*

*PLEASE book them in by contacting Kevin Harrison 0407 772 225*

*Meetings are held at the Chelsea RSL unless otherwise stated.*

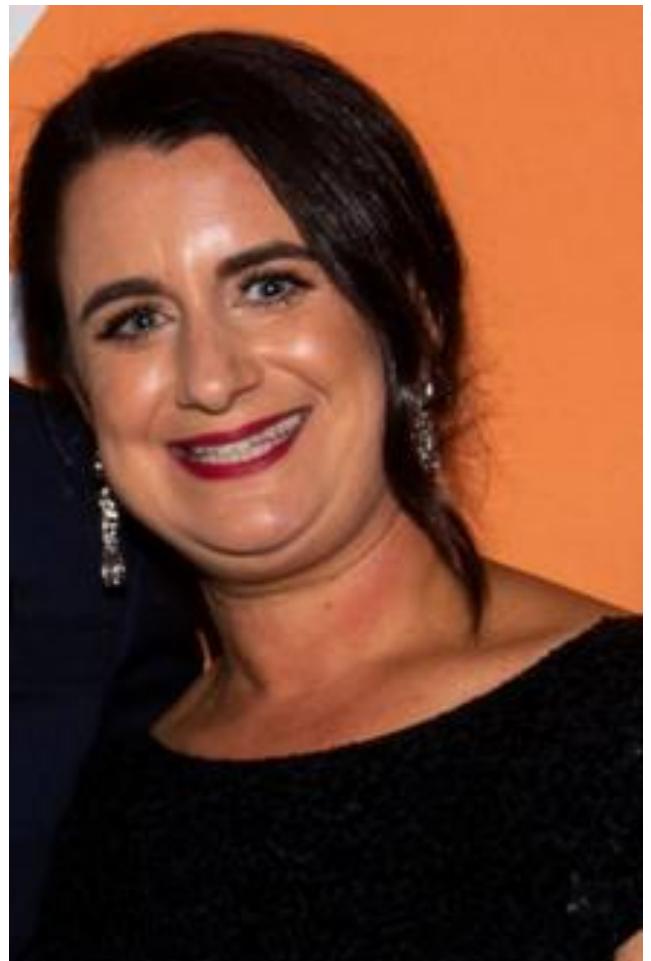
## Guest Speaker this week – Jess Taranto – Mercy Hospital Ships



This week Jess Taranto will be coming to speak with us about [Mercy Hospital Ships](#).

Mercy Ships is an international development organisation that deploys hospital ships and volunteers to developing nations – improving the quality of life for people living with the diseases of poverty, disfigurement, and disability, through direct medical services, and building the capacities of healthcare systems to meet the needs of the future.

Jess is a Clinical Nurse Consultant. You can find out more about the roles and responsibilities of CNCs here: <https://lerna.courses/australia/what-is-a-clinical-nurse-consultant-in-australia/>



# The Surgery Ship



## Watch the Trailer

Watch as a crew of world class medical volunteers from Australia and across the globe face the biggest challenges of their lives.

WATCH NOW



## Find Out More

Learn more about the lives changed and the volunteers making a difference on board *The Surgery Ship*.

FIND OUT MORE



## Behind the Scenes

Find out from the show's director what the crew got up to behind the scenes while on location in West Africa.

LEARN MORE

## Some ABS Data about Chelsea

Find out more at <https://abs.gov.au/census/find-census-data/quickstats/2021/SAL20537>

## Chelsea

2021 Census All persons QuickStats

Geography type [Suburbs and Localities](#)  
Area code SAL20537



<b>People</b>	<b>8,347</b>
Male	46.7%
Female	53.3%
Median age	41



<b>Families</b>	<b>2,214</b>
Average number of children per family	
for families with children	1.7
for all households (a)	0.6



<b>All private dwellings</b>	<b>4,047</b>
Average number of people per household	2.2
Median weekly household income	\$1,683
Median monthly mortgage repayments	\$2,008
Median weekly rent (b)	\$375
Average number of motor vehicles per dwelling	1.5

(a) This label has been updated to more accurately reflect the Census concept shown in this data item. The data has not changed.  
(b) For 2021, median weekly rent calculations exclude dwellings being occupied rent-free.

### Search all persons QuickStats for another area

2021

Enter a location, postcode or geography



Map data © OpenStreetMap contributors, CC-BY-SA

Powered by Esri

Other 2021 Census products available for this area:

• [Community Profiles](#)

To view more QuickStats or Community Profiles for a different area, see [Search Census data](#).

## Income and work



<b>Participation in the labour force</b> People aged 15 years and over	<b>Chelsea</b>	<b>%</b>	<b>Victoria</b>	<b>%</b>	<b>Australia</b>	<b>%</b>
In the labour force	4,389	63.4	3,330,560	62.4	12,695,853	61.1
Not in the labour force	2,221	32.1	1,719,644	32.2	6,888,081	33.1
Not stated	311	4.5	283,829	5.3	1,200,851	5.8

**Note 1:** Calculated percentages represent a proportion of people aged 15 and over in the area.

**Note 2:** The ABS Labour Force Survey provides the official estimates of Australia's labour force. More information is provided in [Comparing 2021 Census and Labour Force Survey](#).

More information on [Labour force status \(LFSP\)](#).

Table based on place of usual residence

<b>Employment status</b> People who reported being in the labour force, aged 15 years and over	<b>Chelsea</b>	<b>%</b>	<b>Victoria</b>	<b>%</b>	<b>Australia</b>	<b>%</b>
Worked full-time	2,633	60.0	1,871,278	56.2	7,095,103	55.9
Worked part-time	1,324	30.2	1,076,741	32.3	3,962,550	31.2
Away from work (a)	275	6.3	214,876	6.5	991,758	7.8
Unemployed	152	3.5	167,667	5.0	646,442	5.1

**Note 1:** Calculated percentages represent a proportion of people aged 15 and over who reported being in the labour force in the area.

**Note 2:** The ABS Labour Force Survey provides the official estimates of Australia's labour force. More information is provided in [Comparing 2021 Census and Labour Force Survey](#).

(a) Counts employed people who reported 0 hours of work the week before the Census or did not state their hours of work.

More information on [Labour force status \(LFSP\)](#).

Table based on place of usual residence

<b>Employment, hours worked</b> Employed people aged 15 years and over	<b>Chelsea</b>	<b>%</b>	<b>Victoria</b>	<b>%</b>	<b>Australia</b>	<b>%</b>
0 hours (away from work)	223	5.3	160,594	5.1	787,382	6.5
1-19 hours	503	11.9	455,966	14.4	1,681,120	14.0
20-29 hours	449	10.6	371,345	11.7	1,373,403	11.4
30-34 hours	365	8.6	249,436	7.9	908,031	7.5
35-39 hours	899	21.2	658,731	20.8	2,487,056	20.6
40-44 hours	987	23.3	685,482	21.7	2,448,402	20.3
45 hours or more	751	17.7	527,063	16.7	2,159,645	17.9

**Note:** Records the number of hours worked in all jobs held during the week before Census Night for employed people aged 15 years and over. This excludes any time off but includes any overtime or extra time worked.

<b>Dwelling count</b>	<b>Chelsea</b>		<b>Victoria</b>		<b>Australia</b>	
<i>Private dwellings (excl. visitor only and other non-classifiable households)</i>		%		%		%
Occupied private dwellings	3,606	92.2	2,390,232	88.9	9,275,217	89.9
Unoccupied private dwellings	304	7.8	298,029	11.1	1,043,776	10.1

More information on [Dwelling type \(DWTD\)](#)

Table based on place of enumeration

<b>Dwelling structure</b>	<b>Chelsea</b>		<b>Victoria</b>		<b>Australia</b>	
<i>Occupied private dwellings (excl. visitor only and other non-classifiable households)</i>		%		%		%
Separate house	1,250	34.7	1,755,423	73.4	6,710,582	72.3
Semi-detached, row or terrace house, townhouse etc	847	23.5	332,251	13.9	1,168,860	12.6
Flat or apartment	1,505	41.7	289,120	12.1	1,319,095	14.2
Other dwelling	4	0.1	10,455	0.4	54,711	0.6

More information on [Dwelling structure \(STRD\)](#)

Table based on place of enumeration

<b>Number of bedrooms</b>	<b>Chelsea</b>		<b>Victoria</b>		<b>Australia</b>	
<i>Occupied private dwellings (excl. visitor only and other non-classifiable households)</i>		%		%		%
None (includes studio apartments or bedsitters)	4	0.1	7,798	0.3	44,864	0.5
1 bedroom	122	3.4	122,594	5.1	488,681	5.3
2 bedrooms	1,482	41.2	456,624	19.1	1,768,530	19.1
3 bedrooms	1,459	40.5	992,656	41.5	3,617,803	39.0
4 or more bedrooms	488	13.6	778,065	32.6	3,224,351	34.8
Number of bedrooms not stated	46	1.3	32,490	1.4	130,989	1.4
Average number of bedrooms per dwelling	2.7	N/A	3.1	N/A	3.1	N/A
Average number of people per household	2.2	N/A	2.5	N/A	2.5	N/A

# Weekly Program

Upcoming events  
June 2024

Rotary   
Club of Chelsea

**4<sup>th</sup>**      **General Meeting.**  
**June**

Venue: Chelsea Hub 3-5 Showers Ave, Chelsea 3196

**7<sup>th</sup>-10<sup>th</sup>** Art show weekend  
**June**    **11<sup>th</sup> June No Meeting**

Venue: Chelsea Hub, 3 - 5 Showers Ave, Chelsea, 3196

**18<sup>th</sup>**      **Guest speaker**  
**June**      **Malcolm Chirverton Membership & Market director 9810**

Venue: Longbeach RSL, 4 Thames Ave, Chelsea, 3196

**25<sup>th</sup>**      **Guest speaker Jess Toranto**  
**June**      **Jessica is a Clinical Nurse Consultant who served on the mercy hospital ship**

Venue: Longbeach RSL, 4 Thames Ave Chelsea. 3196

**2<sup>nd</sup>**  
**July**      **TBA**

Venue: Longbeach RSL, 4 Thames Ave, Chelsea, 3196

P.O Box 103, Chelsea, VIC, 3196  
Incorporation No. A0015255N

## Members: ATTENDING MEETINGS

To enable the RSL to organise their staffing and catering (which directly affects their business viability - and ours!), it is important to advise Kevin Harrison if Members will NOT be attending the Tuesday meeting, by early Tuesday morning at the latest.

OTHERWISE, IT WILL BE DEEMED YOU WILL BE ATTENDING.